



License No. 800025015
FL License # CMTL-0003
CLIA No. 10D1094068

Certificate of Analysis

R&D

**COLEMAN BROTHERS
DISTILLATION**
38 NE 6TH AVE
ONTARIO, OR 97914

Batch # D841
Batch Date: 2021-04-16
Extracted From: Hemp

Test Reg State: Oregon

Production Facility: Coleman Brothers
Distillation
Production Date: 2021-04-16

Order # COL210416-010017
Order Date: 2021-04-16
Sample # AABF614

Sampling Date: 2021-04-19
Lab Batch Date: 2021-04-19
Completion Date: 2021-04-23

Initial Gross Weight: 22.870 g



Potency
Tested

Product Image

Potency - 20

Specimen Weight: 57.500 mg

Analyte	Dilution (1:n)	LOD (%)	LOQ (%)	Result (mg/g)	(%)
Delta-8 THC	10.000	0.000026	0.001	614.600	61.460
Delta-8 THCV	10.000	0.0002	0.001	29.800	2.980
CBNA	10.000	0.000095	0.001	23.200	2.320
CBT	10.000	0.0002	0.001	7.970	0.797
CBN	10.000	0.000014	0.001	4.399	0.440
CBC	10.000	0.000018	0.001	4.126	0.413
THCV	10.000	0.000007	0.001	2.814	0.281
Delta-10 THC	10.000	0.000003	0.001	1.775	0.178
THCA-A	10.000	0.000032	0.001	0.461	0.046
THCVA	10.000	0.000047	0.001	<LOQ	<LOQ
CBDA	10.000	0.00001	0.001	<LOQ	<LOQ
Exo-THC	10.000	0.0002	0.001	<LOQ	<LOQ
CBDV	10.000	0.000065	0.001	<LOQ	<LOQ
CBCA	10.000	0.000107	0.001	<LOQ	<LOQ
CBD	10.000	0.000054	0.001	<LOQ	<LOQ
CBL	10.000	0.000035	0.001	<LOQ	<LOQ
CBGA	10.000	0.00008	0.001	<LOQ	<LOQ
CBG	10.000	0.000248	0.001	<LOQ	<LOQ
CBDVA	10.000	0.000014	0.001	<LOQ	<LOQ
Delta-9 THC	10.000	0.000013	0.001	<LOQ	<LOQ

Tested
(HPLC)

Potency Summary

Total THC 0.040%	Total CBD None Detected
Total CBG None Detected	Total CBN 2.475%
Other Cannabinoids 1.491%	Total Cannabinoids 68.624%

Xueli Gao
Ph.D., DABT
Lab Toxicologist

Aixia Sun
D.H.Sc., M.Sc., B.Sc., MT (AAB)
Lab Director/Principal Scientist



Definitions and Abbreviations used in this report: *Total CBD = CBD + (CBD-A * 0.877), *Total THC = THCA-A * 0.877 + Delta 9 THC, *CBG Total = (CBGA * 0.877) + CBG, *CBN Total = (CBNA * 0.877) + CBN, *Other Cannabinoids Total = CBC + CBDV + THCV + THCVA, *Total Detected Cannabinoids = CBD Total + CBG Total + CBN Total + THC Total + CBC + CBDV + THCV + THCVA, *Analyte Details above show the Dry Weight Concentrations unless specified as 12% moisture concentration. (mg/ml) = Milligrams per Milliliter, LOQ = Limit of Quantitation, LOD = Limit of Detection, Dilution = Dilution Factor (ppb) = Parts per Billion, (%) = Percent, (cfu/g) = Colony Forming Unit per Gram (cfu/g) = Colony Forming Unit per Gram, LOD = Limit of Detection, (µg/g) = Microgram per Gram (ppm) = Parts per Million, (ppm) = (µg/g), (aw) = aw (area ratio) = Area Ratio, (mg/Kg) = Milligram per Kilogram, *Measurement of Uncertainty = +/- 5%



This report shall not be reproduced, without written approval, from ACS Laboratory. The results of this report relate only to the material or product analyzed. Test results are confidential unless explicitly waived otherwise. Accredited by a third-party accrediting body as a competent testing laboratory pursuant to ISO/IEC 17025 of the International Organization for Standardization.



ABSTRAX™ TECH

www.abstraxtech.com | info@abstraxlabs.com | 15550 Rockfield Blvd, Suite B120 | Irvine, CA 92618



Certificate of Analysis

Name:
Matrix:
Lot #:
Product #:

Manufacture Date:
Expiration Date:
Overall Result:

Test	Specification	Result
Appearance		

Volumetric glassware complies with Class A tolerance requirements of ASTM E 288 and NIST Circular 434; it is calibrated before first use and recalibrated regularly in accordance with ASTM E 542 and NIST Procedure NBSIR 74-461. Balances are calibrated regularly with weights certified traceable to the NIST national mass standard. Thermometers and temperature probes are calibrated before first use and recalibrated regularly with a thermometer traceable to NIST standards. All products are prepared according to master documents that assure manufacture according to validated methods. Batch records document raw material traceability and production and testing history for each lot manufactured.

Specific Gravity @ 25 °C	Specification	Result

Gas Chromatograph	Residual Solvent Analysis	Water Activity (A _w)

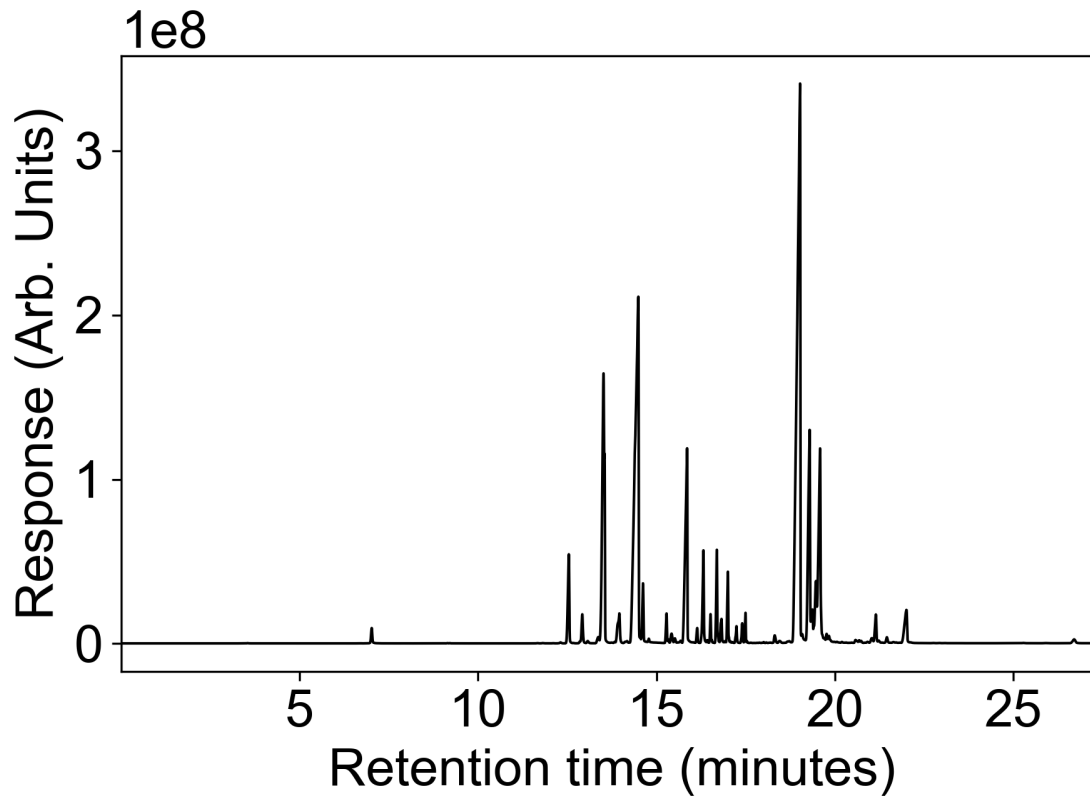
1,2-Dichloroethane
Acetone
Acetonitrile
Benzene
Butane
Chloroform
Ethanol
Ethyl Acetate

Ethyl Ether
Ethylene Oxide
Heptane
Hexane
Isopropyl Alcohol
Methanol
Methylene Chloride
Pentane

www.abstraxtech.com | info@abstraxtech.com | 15550 Rockfield Blvd., Suite B 120 | Irvine, CA

Propane
Trichloroethylene
Toluene

M-xylene
O-xylene
P-xylene



DATA REVIEWED AND APPROVED
BY:

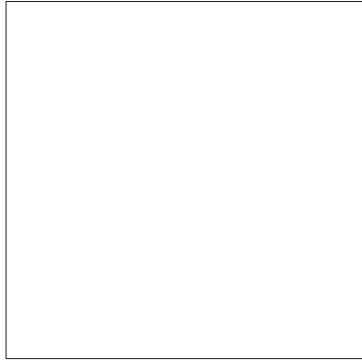
This Certificate of Analysis is accurate to the best of our knowledge. However, the customer is responsible for performing its own assessment to ensure that the material is suitable for its intended applications, including compliance with all pertinent legal requirements. The expected shelf life is calculated from the original manufacture date and is based on unopened containers stored under proper conditions. Once containers have been opened, maintaining minimal headspace and storing under appropriate conditions will aid in preserving the product's integrity.



ABSTRAX™ TECH

www.abstraxtech.com | info@abstraxlabs.com | 15550 Rockfield Blvd, Suite B120 | Irvine, CA 92618

Certificate of Analysis



Name:
Matrix:
Lot #:
Product #:

Manufacture Date:
Expiration Date:
Overall Result:

Test	Specification	Result
Appearance		

Volumetric glassware complies with Class A tolerance requirements of ASTM E 288 and NIST Circular 434; it is calibrated before first use and recalibrated regularly in accordance with ASTM E 542 and NIST Procedure NBSIR 74-461. Balances are calibrated regularly with weights certified traceable to the NIST national mass standard. Thermometers and temperature probes are calibrated before first use and recalibrated regularly with a thermometer traceable to NIST standards. All products are prepared according to master documents that assure manufacture according to validated methods. Batch records document raw material traceability and production and testing history for each lot manufactured.

Specific Gravity @ 25 °C	Specification	Result

Gas Chromatograph	Residual Solvent Analysis	Water Activity (A _w)

1,2-Dichloroethane

Acetone

Acetonitrile

Benzene

Butane

Chloroform

Ethanol

Ethyl Acetate

Ethyl Ether

Ethylene Oxide

Heptane

Hexane

Isopropyl Alcohol

Methanol

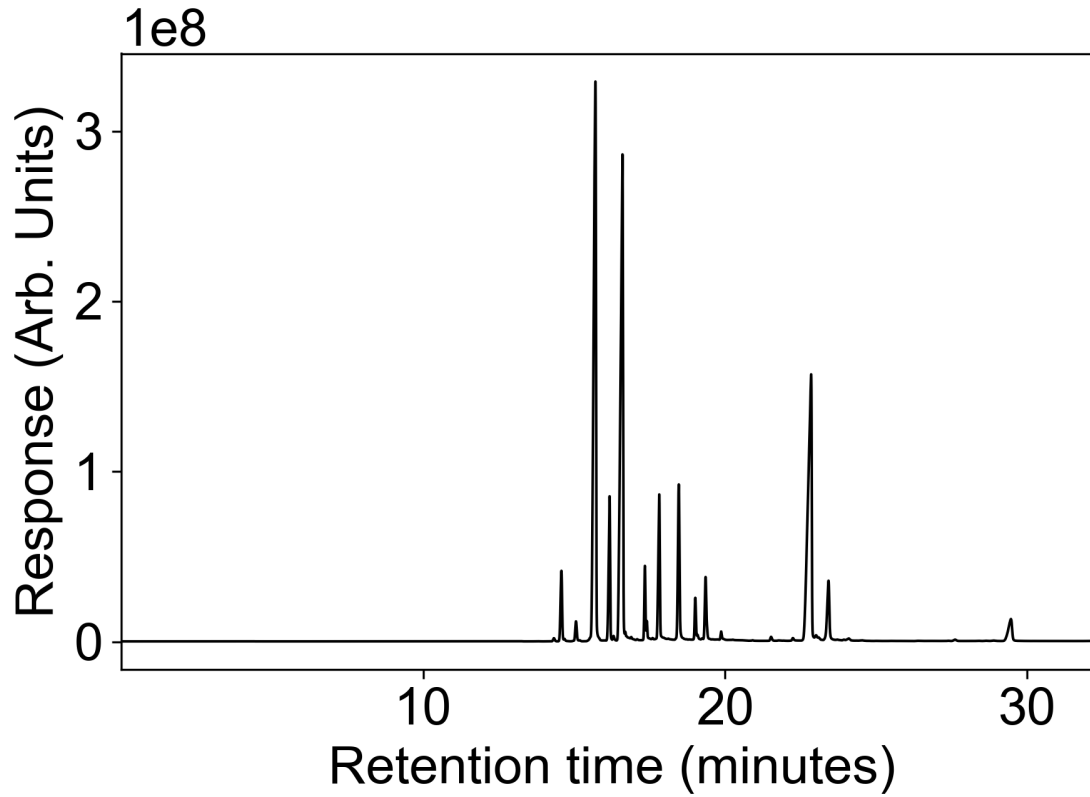
Methylene Chloride

Pentane

www.abstraxtech.com | info@abstraxtech.com | 15550 Rockfield Blvd., Suite B 120 | Irvine, CA

Propane
Trichloroethylene
Toluene

M-xylene
O-xylene
P-xylene



DATA REVIEWED AND APPROVED

BY:

This Certificate of Analysis is accurate to the best of our knowledge. However, the customer is responsible for performing its own assessment to ensure that the material is suitable for its intended applications, including compliance with all pertinent legal requirements. The expected shelf life is calculated from the original manufacture date and is based on unopened containers stored under proper conditions. Once containers have been opened, maintaining minimal headspace and storing under appropriate conditions will aid in preserving the product's integrity.